

WizDx™ COVID-19 CrystalMix™ Multi PCR Kit

Cat. DX1203A 96tests

定性檢測從患者鼻咽拭子、口咽拭子和痰中提取的 COVID-19 之病毒 RNA

特色：

- ✓ 與各種抽病毒 RNA kit 相容
- ✓ 簡單程序進行 COVID-19 診斷
- ✓ 可確保高特異性和靈敏度
- ✓ 室溫穩定的試劑，無需冷鏈物流
- ✓ 與各種 qPCR 系統兼容



Component	Sample	PTC	NTC
COVID-19 CrystalMix tube	1 tube	1 tube	1 tube
Sample (RNA)	20 ul		
COVID-19 Positive Control		20 ul	
RNase-Free Water			20 ul
Total	20 ul	20 ul	20 ul

* PTC : Positive template control, NTC : Non-template control

EzDirect™ Buffer

FREE SAMPLE

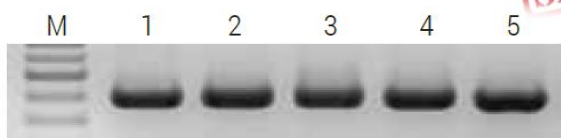


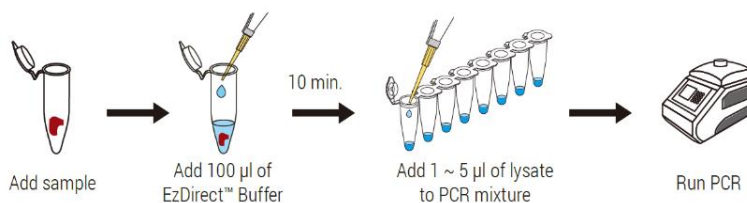
Fig 2. Animal tissue direct-PCR results with EzDirect™ Buffer.

10mg tissue + EzDirect™ Buffer store at R/T for 10min.

1µl of supernatant used as PCR template.

Lane M : 100bp DNA marker Lane 1 : Bovine, Lane 2: Porcine,

Lane 3: Sheep, Lane 4: Equine, Lane 5: Poultry



EzDirect™ Buffer (3.0)	W5101 (25ml)	W5102 (50ml)
buccal swabs, saliva, tissue and plant (leaf & seed)		

EzDirect™ Buffer (Blood)	W5103 (25ml)	W5104 (50ml)
blood, plasma and serum		

- ✓ 免抽 DNA 即可應用於 PCR
- ✓ 10 分鐘製備 PCR template
- ✓ 適用於動植物組織、血液、細胞、大部分檢體

